



10/24/2008

FAQ's

Pro vs. Std

Quick Start

Reviews

Feedback

Support

Subscriber

Reading Corner



Configuring the BDE for Windows Vista

Note: This page applies **ONLY** to users of Windows Vista using Insider TA v4.0 through v6.0. This page no longer applies to the latest Insider TA version 6.1. If you have purchased Insider TA v6.1 (or updated to v6.1 as discussed in [this page](#)), then what follows no longer applies to you.

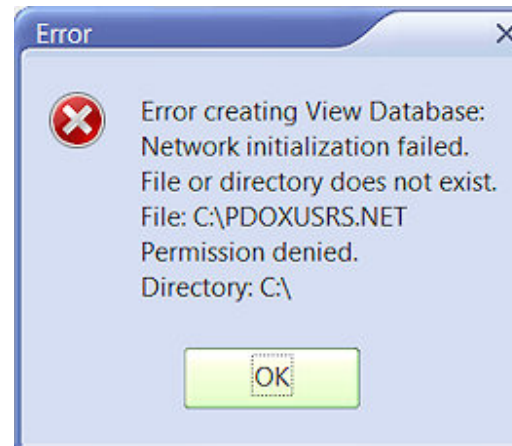
Insider TA (versions 4.0 through 6.0) by Stock Blocks Inc[®] uses the **Borland Database Engine (BDE)** for underlying operations. Windows Vista can be very restrictive towards applications written for the previous versions of Windows. This is also the case with the BDE, which is not capable of running in Vista unless two settings have been changed:

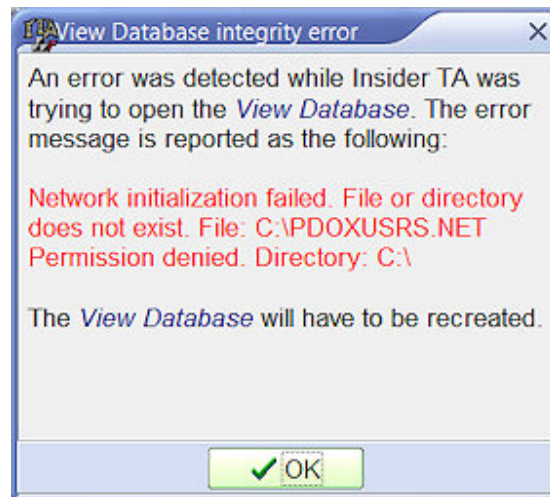
1. A permission for the BDE must be given in the windows registry database. *(Required for all versions of Insider TA)*
2. A BDE attribute named "Net Dir" must be configured to an arbitrary folder other than the root drive (C:\). This configuration is done in the "BDE Administrator" program that's installed with Insider TA. *(This step is automatically performed by Insider TA v6.0 and higher)*

Without these two steps being performed, you'll see the following two error messages appear immediately after Insider TA is loaded:

First you'll see this...

Then you'll see this...



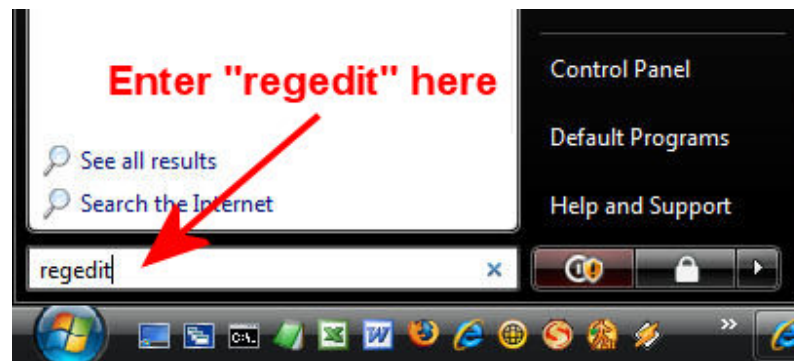


The following instructions are to be carried out after installing Insider TA to your Vista computer...

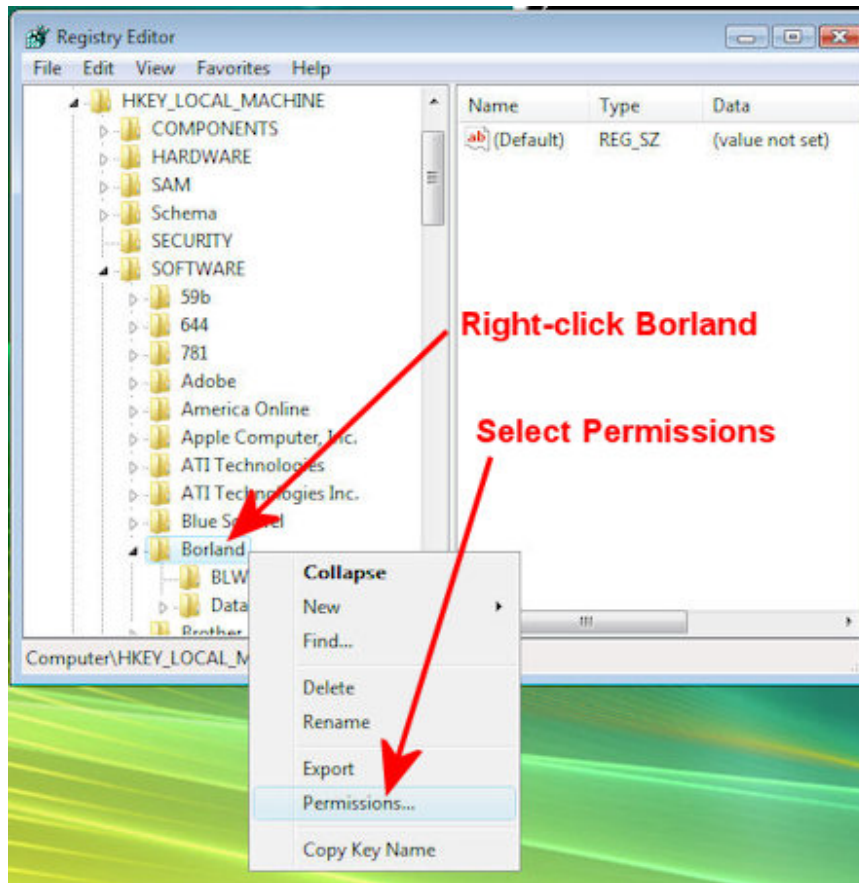
1. First, configure the permission for the BDE in the registry...

Make sure you are logged into your Vista machine with an administrator account. Then follow these directions:

1. Go to Start | Run... Type regedit...

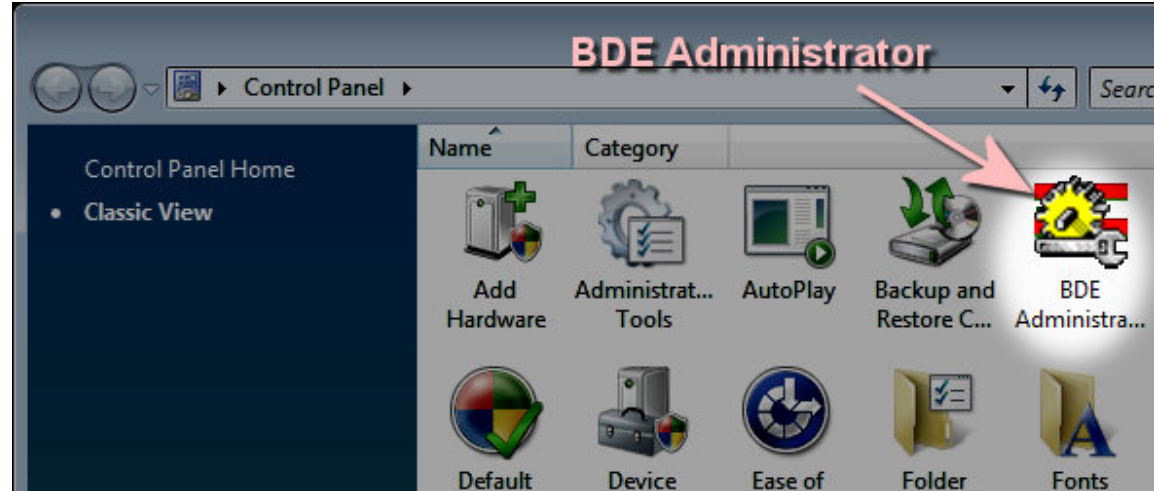


2. Open the HKEY_LOCAL_MACHINE branch.
3. Open the SOFTWARE branch.
4. Right-Click on the entry labeled "Borland".

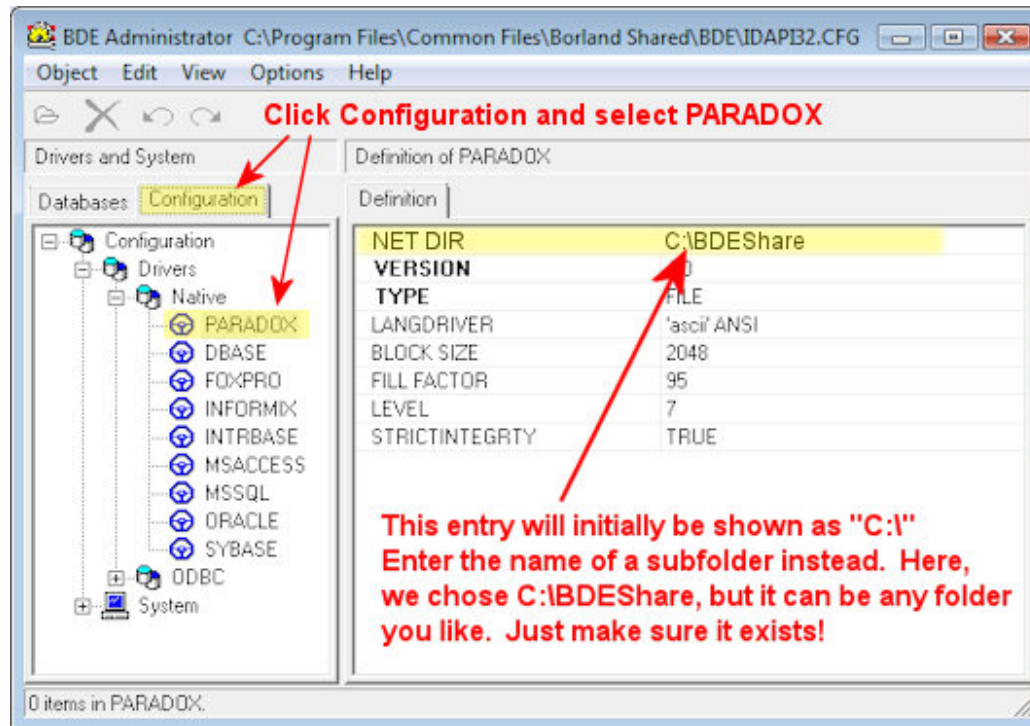


5. In the menu that shows select Permissions. The following dialog will appear:

Now the BDE must be configured to use the new folder. This is done in the Windows control panel, where you will find an applet named "BDE administrator". *Note that you will only see this after the BDE has been installed to your system (which is done automatically during the Insider TA installation).*



Double-click the BDE Administrator to open it. You will see the following dialog appear:





As shown in the above picture, click the tabsheet titled "Configuration". Expand the configuration as shown (Drivers - Native) to expose the entry titled "PARADOX". Single click the item named PARADOX. Now observe the data that fills on the right half of the dialog. You will need to edit the entry for "NET DIR". Initially, it will be shown as "C:\". You need to change that entry to the subfolder that you created above. In our example, this is C:\BDEShare.

If the BDE Administrator is not capable of making the change then verify that the permission in the registry has been set properly. If this isn't the case then retry to apply the permission as described in the above.

Now start Insider TA. With the BDE now happy with Vista (actually, the other way around!), Insider TA will now function properly.

[Home Page](#) | [Privacy Statement](#) | [Order](#) | [Internet Update](#) | [Support](#) | [What's This? Map](#) | [Data Compatibility](#) | [User Feedback](#) | [FAQ's](#) | [Demo Download](#) | [Quickstart Tips](#) | [STD vs PRO comparison](#)

[Questions or Comments](#)



Copyright ©1995-2008 Stock Blocks, Inc.®
Stock Blocks is a registered trademark of Stock Blocks,
Inc.